

## Resident Speaker Bio



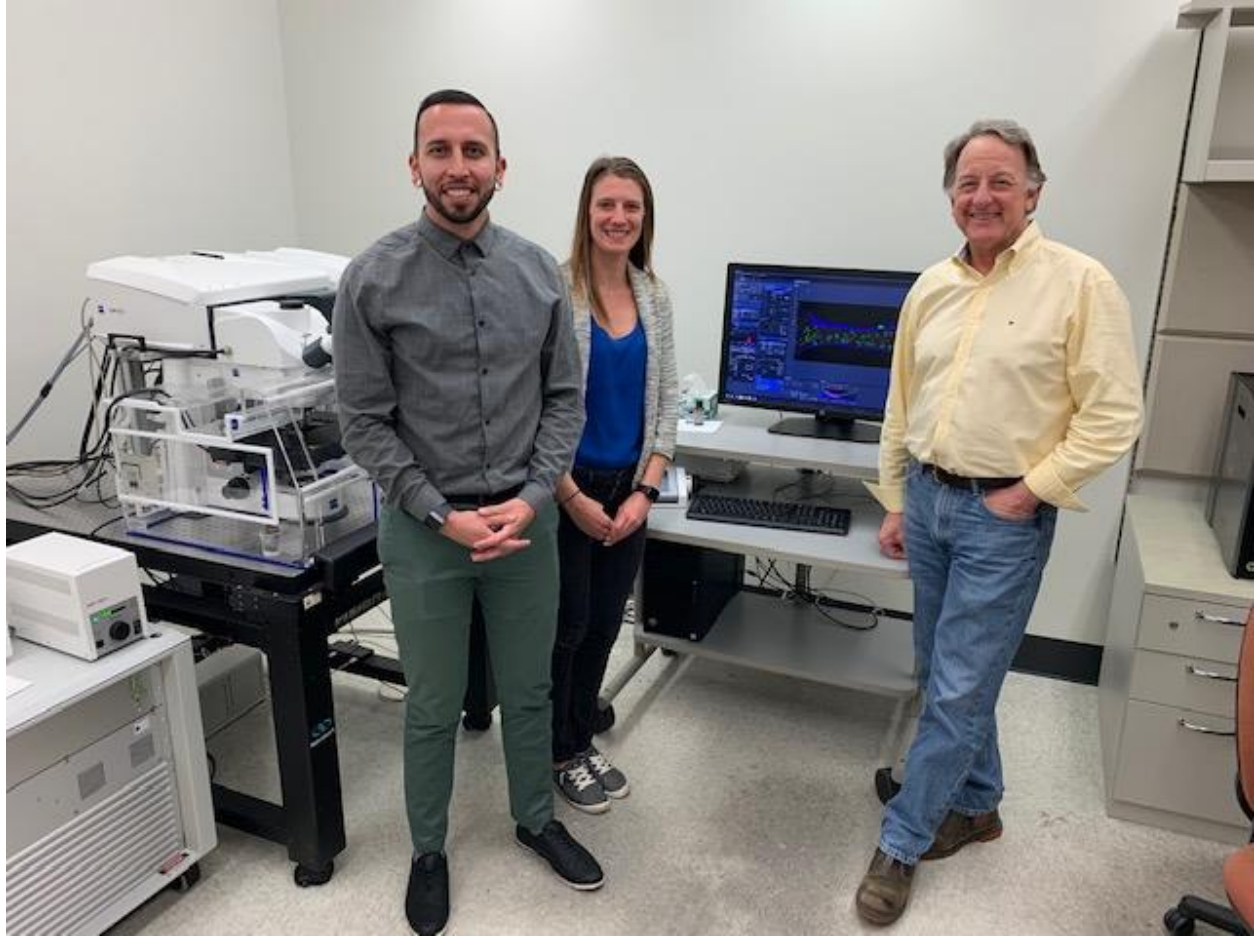
Ashley Kita, MD

Ashley is a Resident Physician in UCLA's Department of Head and Neck Surgery. She studied Engineering at UC Berkeley and has been fascinated with translating engineering tools to powerful clinical applications ever since. She developed a point-of-care device for diagnosing cerebrospinal fluid that is currently undergoing clinical validation and patented a device to grow blood vessels in vitro. She is excited to continue working with multidisciplinary teams to create impactful biotechnology in the future.



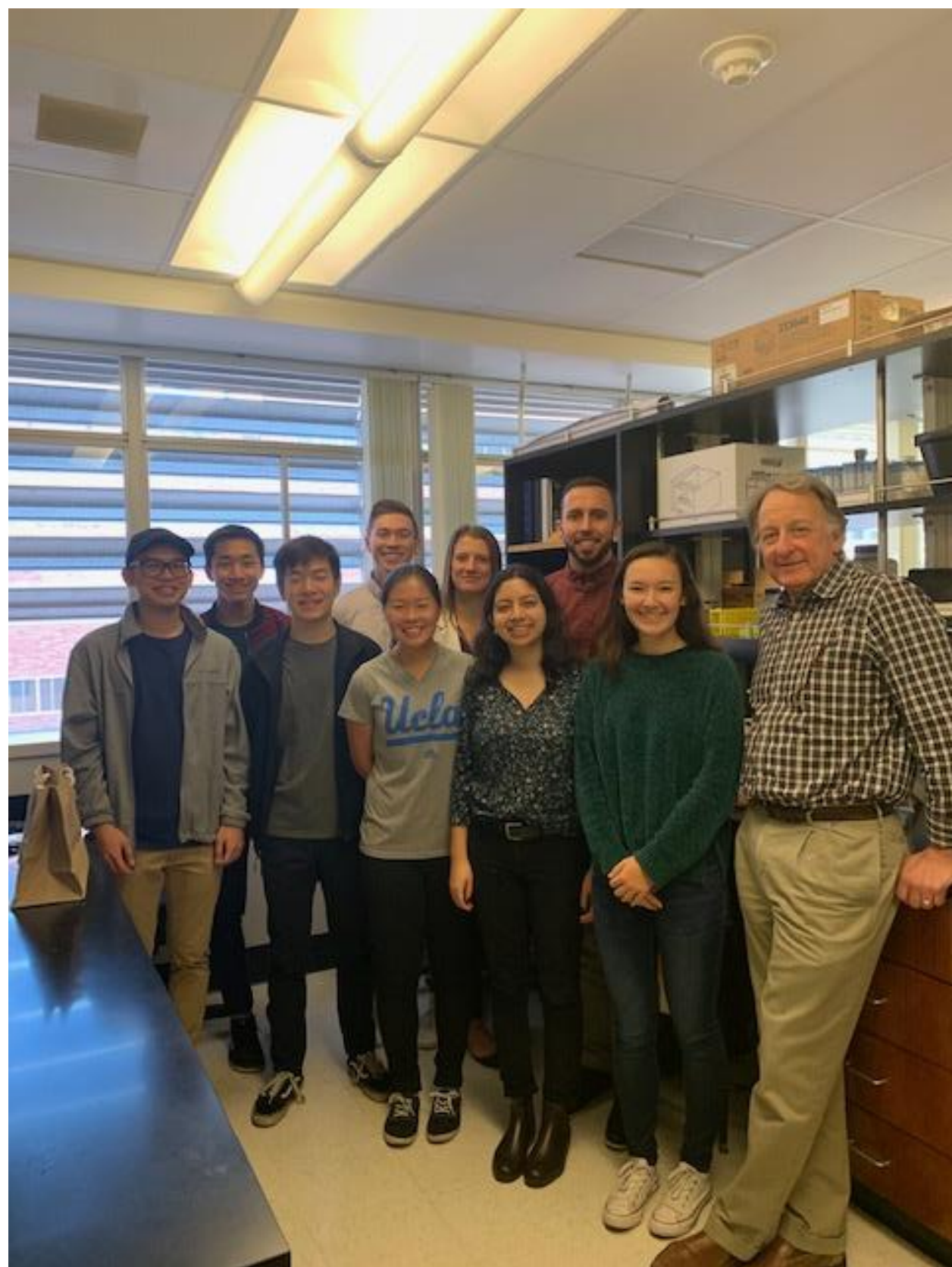
Johnny J. Saldate, Ph.D., is a Postdoctoral Scholar in the Department of Head and Neck Surgery at the David Geffen School of Medicine at UCLA. He has strong research interests in understanding how cellular- and circuit-level mechanisms influence synaptic physiology. Johnny received his M.S. and Ph.D. in Neuroscience from the University of Michigan Medical School. He has received several honors and awards for his work and published in multiple peer-reviewed journals.

**Additional Images:**



Johnny Saldate, Ashley Kita, and Larry Hoffman in the confocal imaging suite.





Full Team from left to right: Jeremy Jong, Riley Matsuda, Brandon Shih, Andrew Schmidt, Courtney Chang, Ashley Kita, Nitika Chellappa, Johnny Saldate, Kari Schoettler, Larry Hoffman